



**SMART MEDIA  
SOLUTIONS**

wherever you need your image

SMS products and solutions overview

MARCH 2023

# WHO WE ARE

SMS develops, markets and sells clever products for wherever you need a communication, presentation or collaboration solution.

We love to collaborate with design driven organizations who want a reliable partner in delivering brand building and flexible solutions.

Since the 1970's, we have been known and appreciated for groundbreaking innovations, high quality products and a stylish Swedish design. We achieve this by building a smart and flexible product range focused on user experience, European top of the line manufacturing, rigorous testing and taking pride in being responsible for a great end result.

So wherever you need your image, SMS can help you with long-lasting and flexible solutions that are easy to install and make you look good.



# A LONG HISTORY OF INNOVATION



**Our first TV-bracket**  
Used in most schools in Sweden

1973



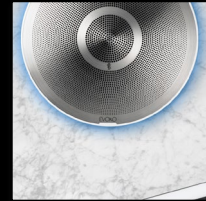
**SMS Polytech**  
The thinnest wall bracket on the market

2006



**SMS Presence**  
A unique and elegant stand perfect for large, heavy displays

2012



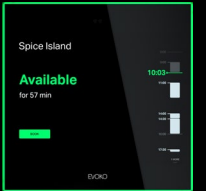
**Liso room manager**  
The second generation room manager is launched

2016



**SMS LEDDY**  
Innovative all-in-one LED display solution is launched

2020



**Naso room manager**  
Room booking and beyond

2021

1960

**Nicke**  
A coffee pot stand, Nicke, is the start of our history as an adaptive and innovative company



**SMS Projector Unislide**  
The world's first unislide for projectors

2002



**Evoko Room Manager**  
The Evoko Room Manager pioneered the room booking space and laid the foundation for the Evoko brand

2009



**Evoko Minto**  
The innovative conference phone is launched

2014



**SMS SmartTrim**  
An elegant trim, easy to install, for Barco UniSee®

2018



# LEDDY WALL/FLOOR

## SMS LEDDY

- SMS Leddy is a flexible product that can easily adapt to new configurations and all-in-one LED display solutions. These pre-configured stands are designed to fit many displays from the leading LED manufacturers. The elegant Scandinavian design with a wooden frame makes it easy to integrate the product with the surrounding environment. SMS Leddy comes extensively pre-mounted for easy installation and is ADA compliant.
- SMS Leddy Wall/Floor uses very little floor space and is perfect in small spaces where a bracket with legs are in the way. Elegant storage space below the display where cables and peripherals are hidden inside.
- Available in Black, Birch, Oak and Walnut



Black



Birch



Oak



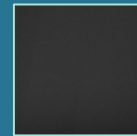
Walnut





## LEDDY FREE SMS LEDDY

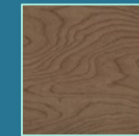
- SMS Leddy is a flexible product that can easily adapt to new configurations and all-in-one LED display solutions. These pre-configured stands are designed to fit many displays from the leading LED manufacturers. An elegant Scandinavian design with a wooden frame makes it easy to integrate the product with the surrounding environment. SMS Leddy comes extensively pre-mounted.
- SMS Leddy Free is the elegant freestanding version, looking good also from the back thanks to the discrete back cover. As an accessory, choose leg inserts with wooden finish (not incl.), to get that high end furniture touch and feel.
- Available in Black, Birch, Oak and Walnut



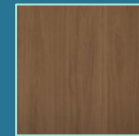
Black



Birch



Oak



Walnut

# LEDDY WALL

## SMS LEDDY

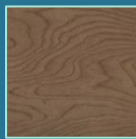
- SMS Leddy is a flexible product that can easily adapt to new configurations and all-in-one LED display solutions. These pre-configured stands are designed to fit many of displays from the leading LED manufacturers. An elegant Scandinavian design with a wooden frame makes it easy to integrate the product with the surrounding environment. SMS Leddy comes extensively pre-mounted for easy installation.
- SMS Leddy Wall is perfect in small spaces where a bracket with legs are in the way.
- Available in Black, Birch, Oak and Walnut



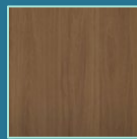
Black



Birch



Oak



Walnut





SMS SMARTTRIM

# SMS SMARTTRIM™ FOR BARCO UNISEE®

## An elegant trim, easy to install

- SMS SmartTrim is a modular system designed specifically to frame Barco UniSee® video walls. SmartTrim uses a patent pending design to click the trim in place for a quick and easy installation
- The unique design is clean, elegant, and design protected. It's ideal for new and retrofit projects with Barco UniSee®
- SmartTrim uses lightweight yet rigid components with multiple locking points for a safe and accurate installation
- **Colors:** White, dark grey, and black
- **Standard configurations:** 2x2, 2x3, 2x4, 3x2, 3x3, 3x4, 4x2, 4x3, 4x4

# SMS TIPSTER 2 MOBILE

## Ready to roll

- SMS Tipster 2 Mobile is an excellent mobile floorstand for corporate and conference. Smart, light, and designed for modern slim displays (max VESA 400 x 400 mm), it can hold your display in both portrait and landscape mode.
- Easy to move thanks to smooth, lockable wheels. The ingenious two-pipe design adds further to the clean look of SMS Tipster 2 Mobile. The pipes have room for cables, which can exit just above the casted aluminum foot, or under it, whichever suits the installation best.
- Place your display at one of four fixed heights. Recommended display sizes from 32" to 75".
- **Color:** Dark Grey
- **Max screen weight:** 50kg / 110lbs
- **Recommended display sizes:** appr. 32" to 75"
- **VESA:** 400x400





SMS TIPSTER 2

## SMS TIPSTER 2

### Clean look and stable feet

- SMS Tipster 2 is a great choice for events, retail and corporate. This floorstand is designed for modern slim displays with max VESA 400 x 400 mm, and can be used in both portrait and landscape mode. One of many clever details is the adjustable feet for stable placement on uneven floors. The two-pipe design adds further to the stability and the clean look of SMS Tipster 2.
- The pipes have room for cables, and the cables can exit just above the foot, or under it. Installation is simple and cost-effective. Four fixed heights to suit different needs.
- **Color:** Dark Grey
- **Max screen weight:** 50 kg
- **Recommended display sizes:** appr. 32" to 75"
- **VESA:** 400x400



# SMS TIPSTER 2 ACCESSORIES

Perfect matches to Tipster 2

Camera shelf



Disinfection holder



Media compartment



Multi-use shelf



# SMS PRESENCE MOBILE MOTORIZED

Elegant and flexible stability for  
really big displays

- A unique design that completely hides cables and peripherals inside the product. Attractive and elegant on all sides, and thus able to be placed in the center of the room. Perfect for large, heavy and touch sensitive displays, due to the very stable, patented design.
- The motorized height adjustment is soft and quiet, readily available from a button at the side of the unit, behind the display.
- The display can be locked with the accompanying locking screw for personal safety
- Other versions of Presence Mobile include:
  - Fixed
  - XL
  - Flipster
  - Vide conference
  - Speed



# SMS PRESENCE WALL/FLOOR MOTORIZED

Smooth and stylish access for everyone

- Do you need to mount a large and heavy display or touch sensitive display on a regular wall? With a quick, easy and stylish installation too?
- SMS Presence Wall/Floor Motorized makes it all possible, a perfect support in the lobby area or conference room. A smart design shifts the weight to the floor. Furthermore, the stand itself uses very little floor space and is perfect in small spaces where a bracket with legs are in the way.
- Everyone can reach thanks to the soft motorized height adjustment. The SMS Presence Wall/Floor Motorized is extensively pre-mounted for easy installation
- Other versions of Presence Wall/Floor include:
  - Fixed
  - Flipster
  - Vide conference
  - Speed





FUNC WALL/FLOOR MOTORIZED

# FUNC WALL/FLOOR MOTORIZED

Stable and functional

- Func Wall/Floor Motorized is easy to adjust for different needs. The very stable design is perfect for large heavy displays and touch displays. The motorized height adjustment ensures that the user can interact with the display in an ergonomic position.
- The smart design shifts the weight to the floor, which means you can use a heavy display also on thin walls.
- A storage box for e.g. codec, mini PC, or laptop is included. The box can be locked with a padlock (not supplied).
- **Color:** Black and white
- **Max screen weight: 120 kg**
- **VESA:** 800x400

# FUNC MOBILE MOTORIZED

Easy to move, easy to reach

- Func Mobile Motorized is easy to adjust for different needs. The very stable design is perfect for large displays and touch displays. The pre-assembled motorized height adjustment ensures that the user can work ergonomically.
- Thanks to the lockable wheels, it is easy to move the unit between rooms. In other words, perfect for places where the display will be the center of attention for people with different needs.
- A storage box is included, for e.g. mini PC or codec, easily accessed from the front.
- **Colors:** Black and white
- **Max screen weight:** 120 kg
- Other versions of Func Mobile includes:
  - Fixed
  - Video conference (fixed)
  - Flipster 2





FUNC MOBILE MOTORIZED FLIPSTER 2

# FUNC MOBILE MOTORIZED FLIPSTER 2

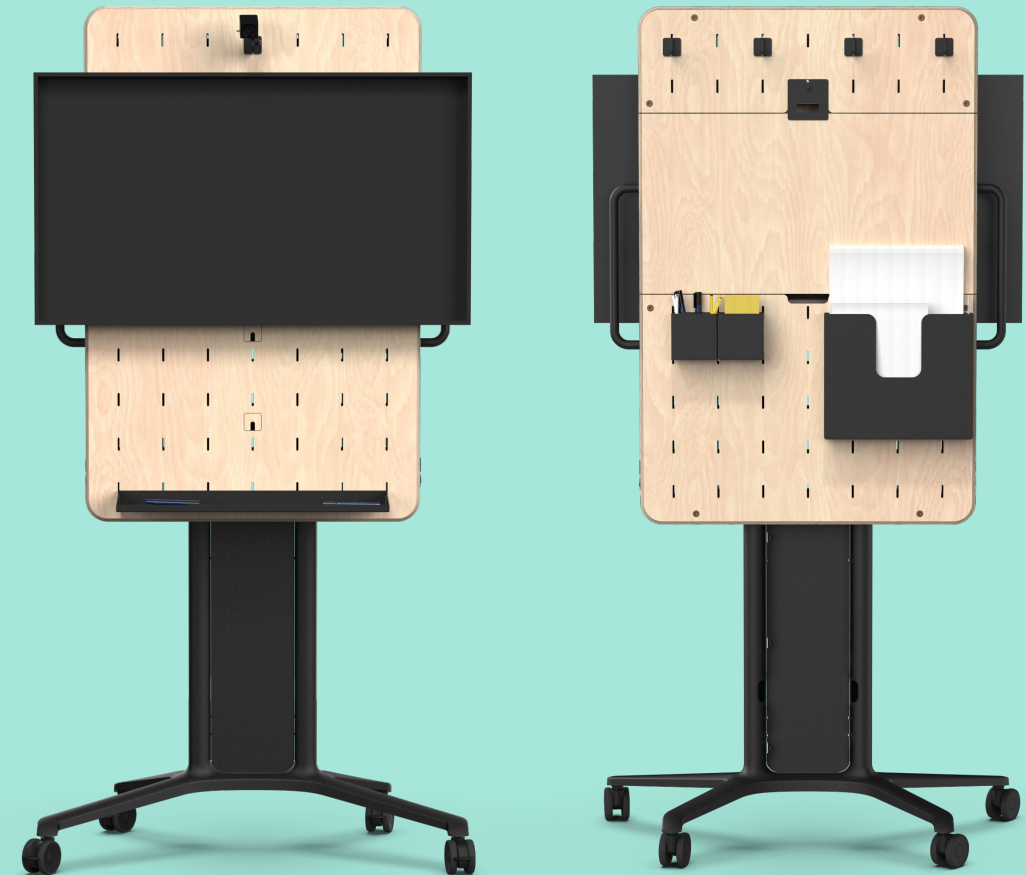
Up to 65" - move, rotate, adjust the height

- Func Mobile Motorized Flipster 2 will help you move around, rotate, and - perhaps best of all! - height-adjust your touch display
- The stable and easy-accessible design is perfect for many rotatable touch screens such as Samsung Flip, Flip 2 in sizes 55 "and 65", Microsoft Surface Hub 2S 55", but also other large displays that need to be rotated for storage reasons. Now also with VESA 350x350 and 400x200
- Easily flip the display from landscape to portrait orientation by hand – no tools needed
- **Color:** Black and white
- **Max screen weight:** 50 kg
- **VESA:** 400x400

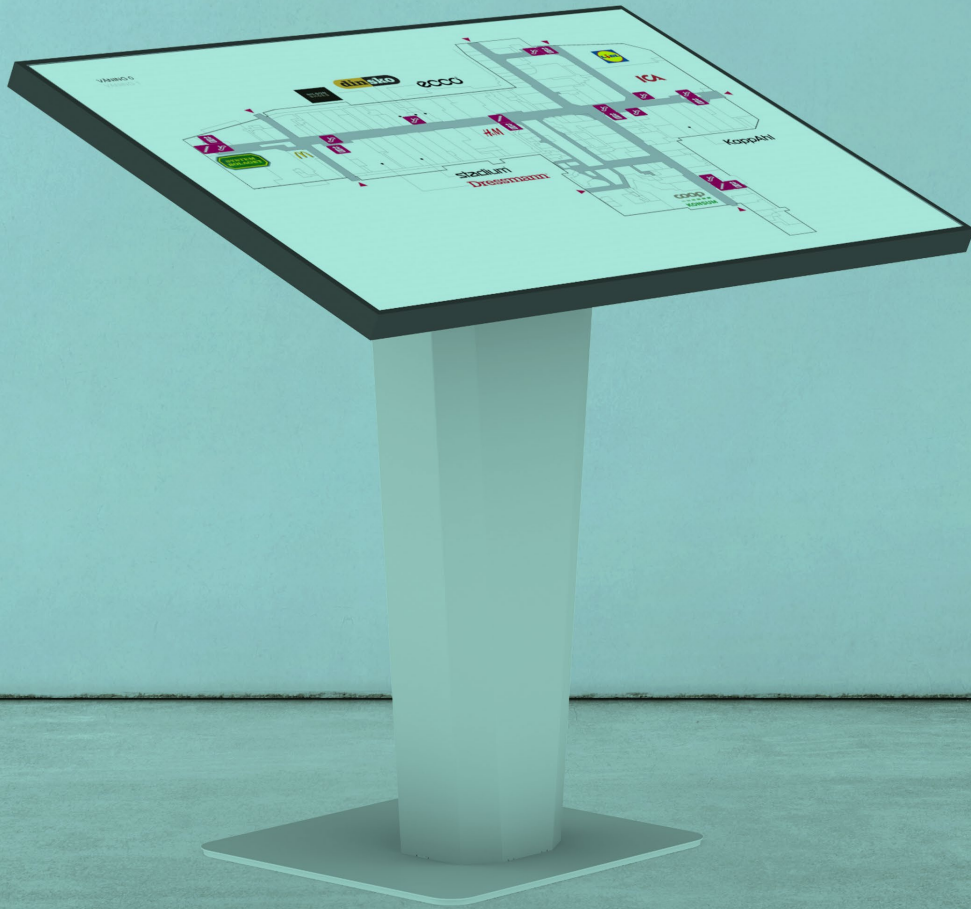
# SMS Peggy One – Engaged meeting

## Designed for hybrid

- Peggy One is a product made to encourage collaboration, engagement and equality within teams, no matter where individuals are located. With a clear focus on mobility and flexibility, Peggy One provides a hassle-free integration of your electronic equipment and makes them suitable for use in all areas of the office space.
- While the amount of equipment on ordinary floorstands are limited, the large mounting interface on Peggy One can carry everything you need. Use our flexible brackets and accessories to fasten your devices, or simply secure equipment directly to the panels.
- **Included accessories:** Display mount, camera holder, metal shelf, 4x hangers, 2x small bins, 1x large bin, detachable laptop holder, 1x USB-A 3.0, 1x USB-C.
- **Color:** Black with Birch panels
- **Max screen weight:** 30kg
- **Recommended display sizes:** Up to 55" **VESA:** 400x400







# SMS ICON NAVIGATOR

## Never get lost again

- The SMS Icon Navigator will guide your customers and visitors - any time!
- This floorstand has it all - an elegant, clever design with hidden cables, a secret compartment for media equipment, fixed negative tilt, and a stable foot. SMS Icon Navigator is the excellent choice for malls, exhibitions, hospitals or shop-in-shop concepts. Excellent for touch displays.
- Recommended display size for the standard version: 40" to 55". XL version available for 55-65" displays
- **Colors:** White and dark grey
- **VESA:** 400x400
- **Maximum screen weight:** 50kg / 110 lbs

# SMS CASING WALL

Perfect for digital signage and information in public spaces

- Excellent choice for the lobby, stairway, next to the elevators - or anywhere the public should be met with information or engaging messages. A perfect way to show the list of tenants in a corporate or residential building. The display will be covered from all sides.
- The display mount is integrated in the casing and SMS Casing Wall can be used both in landscape and portrait orientation, simply choose when mounting.
- You can choose polycarbonate glass or a version without front glass. Hidden cable outlets minimize the risk of someone accessing the display, and the product is locked with safety screws (included).
- **Colors:** Black, dark grey and white
- **Sizes:** 32", 43", 49", 55" and 65"



SMS MULTI DISPLAY WALL

# SMS MULTI DISPLAY WALL ACE

Mount a video wall simply, attractively and with very high flexibility

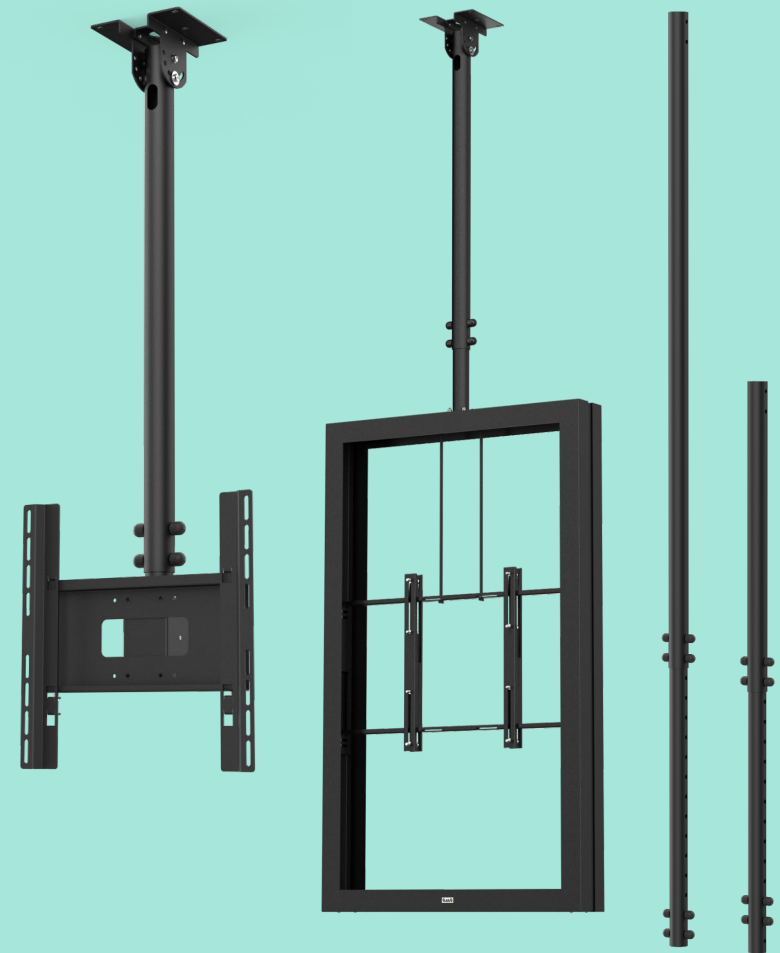
- Ace is robust, simple and flexible. An ingenious lock mechanism guarantees that the displays remain firmly in their innermost position.
- Universal video wall solution for displays in both landscape and portrait mode.
- Developed for the leading displays on the market with dimensions 46-60", for professional video walls.
- "Slide and Access" function for easy access behind a display, with the remaining displays in operation.
- Simple ordering – one article number specifies one package per display
- **Max screen weight:** 45 kg
- **VESA:** 600x400



# Func Ceiling

A versatile ceiling mount for indoor digital signage

- Our modern classic, the Func Ceiling mount is both strong and neat at the same time. The functionality is outstanding! Func Ceiling is tiltable to provide the best viewing angle and cables are discreetly fed through the pipe. This new updated version of the mount also has more cable exits on the bottom and top. We have increased the stability and added a better adjustability.
- Put two displays in a back-to-back configuration with the Func Ceiling Dual versions.
- Use the accessory extension pipes to get that extra long mount needed when you have a long distance to the ceiling.
- **Colors:** White, or black
- **Max Screen weight:** 50 kg
- **Three VESA versions and Casing mount:** 400x400, 800x400, 400x800 or for use with a ceiling mounted casing.



# SMS CASING CEILING™

A versatile casing for indoor digital signage

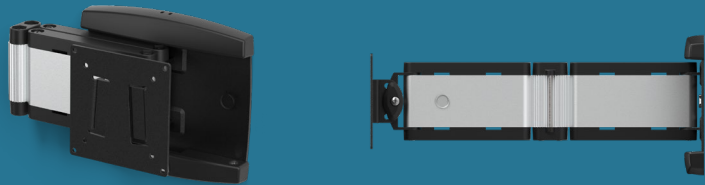
- Meet and inspire your visitors with attractive content inside the shopping mall, in the hotel lobby or at the airport. Use a high-brightness display to pull customers in from the street, and a standard display to present product info and promotions in the store.
- Put two displays in a back-to-back Casing Ceiling Top Mounted, or use the single version if one display is all you need
- The product can be hung from ceiling with wire or ceiling bracket (not included), depending on the needs of your installation.
- **Colors:** White, dark grey and black
- **Screen sizes:** 43", 49", 55"
- **VESA:** 400x400



# SMS ICON 3D ARMS

Compact design that will keep your display close to the wall

## SMS Icon 3D Small



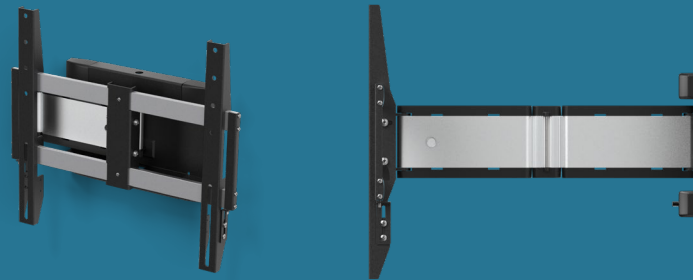
- The SMS Icon 3D Small is the smallest and lightest of our 3D arms. Even though we have designed a thin, flat wall bracket it is still very safe and reliable.

- **VESA:** 100x100\*
- **Max weight:** 12kg
- **Colors:** Black

\*Add VESA extensions to get a 200x200 VESA  
**Sold separately**



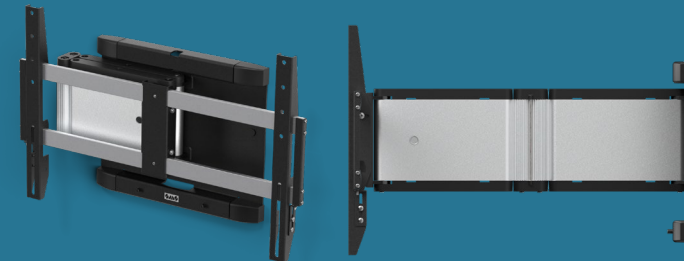
## SMS Icon 3D Medium



- The SMS Icon 3D Medium is an elegant way to extend the use of your display, regardless of the architectural limitations of the room. The SMS Icon WM 3D can be adjusted almost any way you want.

- **VESA:** 400x400
- **Max weight:** 25kg
- **Colors:** Black

## SMS Icon 3D Large



- SMS Icon 3D Large, our large wall mount with an extendable arm, is secure, gracile and strong. It can support a distance of over 60 cm from the wall, or you can affix your display at 10 cm from the wall.

- **VESA:** 600x400
- **Max weight:** 40kg
- **Colors:** Black



# SMART MEDIA SOLUTIONS

wherever you need your image